

OTO PERK



HEUI REPAIR KITS CATALOG

CUMMINS – DETROIT - NAVISTAR



OTO PERK A.S.

Sair Esref Bulvarı No: 27/2 35210 Izmir – TURKIYE

Tel : +90.232.4782990 Fax : 232.4783010

E-Mail : otoperk@eurodiesel.com Web : www.eurodiesel.com



+90.535 452 7030



PRK26124 R/K Cummins N14 - M11

Use : Cummins N14 – M11 Injectors

Other : M-26124



PRK3060001A R/K Cummins N14 - M11

Use : Cummins N14 – M11 Injectors

Other : 3060001 Similar



PRK3060001 Complete Repair Kit Celect

Use : Cummins Celect N14 – M11 – L10 Injectors

OEM : 3060001 - 1211594



A1-23916 Pressure Spring N14 - M11

Use : Cummins N14 – M11 – L10 Injectors

Other : 3066738



PRK9898 Wiring Harness Cummins Without End Socket (Economical Version)

Use : Cummins N14 – M11 – L10 Injectors

Other : Similar 3803682



PRK3803682 Wiring Harness Cummins Complete

Use : Cummins N14 – M11 – L10 Injectors

Other : 3066738



PRK3411711 Plunger Male Ceramic

Use : Cummins N14 – M11 – L10 Injectors

Other : 3411711



PRK3010242 Cummins N14 Pump R/K

Use : Cummins Fuel Pump Gasket Kit for NT-903-KT 3010242, 3004122, AR45246; PAI 131504



Cummins Injector Tips / Nozzles

Catalog is at the end of file



PRK3095356 Splined Drive Shaft

Use : Cummins Celect



PRK3034407 Poppet Valve

Use : Cummins N14 M11

Other : 7991123



A1-23968 Body O'Ring Kit

Use : Cummins ISX – QSX



A1-23968A Body O'Ring Kit Inc. Base washer

Use : Cummins ISX – QSX / For 1 Cyl

Oem : 1441237



A1-23968S Body O'Ring Kit Inc. Base washer

Use : Cummins ISX – QSX / For 6 Cylinders



A1-23968C Complete Repair Kits

Including O-rings + Filters + O,I Seal

Use : Cummins ISX – QSX

Oem No : 5025063



EDB171 Oil Seal

Use : Cummins ISX – QSX

Oem No : 5025063

Cummins ISX – QSX Injector Repair Kits



ED4009692 Inj. Body Filter Upper
Use : Cummins ISX – QSX
Oem No : 4009692



ED3087316 Inj. Body Filter Lower
Use : Cummins ISX – QSX
Oem No : 3087316



A1-23967 Injector Spring ISX-QSX
Use : Cummins ISX – QSX
Scania R series



A1-23967A Injector Spring ISX-QSX
Use : Cummins ISX – QSX
Scania R series



Cummins ISX - QSX Injector Nozzles



Perk Ref	Nozzle No	Injector Used	Other	Engine Type	Holes
PRK-QSX4928264	4928264	4928260		Cummins ISX	6
PRK-QSX4088652	4088652	4062569		Cummins QSX	8
PRK-QSX4088648	4088648	4062568		Cummins ISX - QSX	8
PRK-QSX4088660	4088660	4088327		Cummins ISX	9
PRK-QSX4088662	4088662	4088665		Cummins ISX 475	9
PRK-QSX4902824	4902824	1846348		Cummins QSX	8
PRK-QSX4076965	4076965	4954646	1764365	ISX Small Tip	9
PRK-QSX4903455	4903455	4521978	1499257	Cummins ISX	8
PRK-QSX4954886	4954886	4954888		Cummins ISX	9
PRK-QSX4954432	4954432	4954434		Cummins ISX	7
PRK-QSX3348357	3348357			Cummins ISX	8
PRK-QSX3331254	3331254	1521977		Cummins - Scania ISX	8

Pump Actuator Kits for Cummins X15 - ISX15 - QSX15



Oem part No	Other
1521175	4902904
1541153	4902906
1721753	
1724537	
1784239	
4089980	
1513302	4902905
1541154	
1721734	
1724538	
1784240	
4089981	



PRK-XPI01 Injector Plate Kit XPI

Use : Cummins HPI

Cummins XPI Series



PRK-XPI2897551A Nozzle for INJ. XPI
Without pin (8 HOLES)

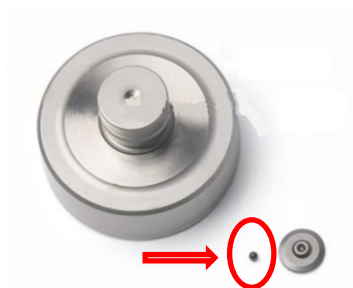
PRK-XPIP4384025 Nozzle for INJ. XPI
Without pin (10 HOLES)



PRK-2872866 XPI Injector Solenoid

Use : Cummins XPI

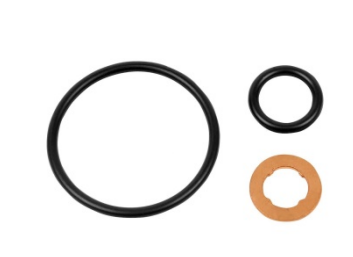
Injectors Used : Universal



PRK-XPI01B Sphere for XPI Plate

Use : Cummins XPI

Small Sphere for the valve Seat



PRK-XPI03 R/K Injector XPI

Use : Cummins XPI

Oem Ref : 1932820 - 1933246



A1-23490 **Injector Repair Kit**
Kit Including Heat Shield

Use : Ford Powerstroke 7.3 - Navistar



A1-23580 **Injector Repair Kit**
Complete Kit

Use : Ford Powerstroke 7.3 - Navistar



A1-23578 **Injector Repair Kit**
Complte Body + Internal kit

Use : Ford Powerstroke 6.0 / 4.5 L / G2.8



A1-23577 **Injector Repair Kit**
Internal repair Kit

Use : Ford Powerstroke 6.0 / 4.5 L / G2.8

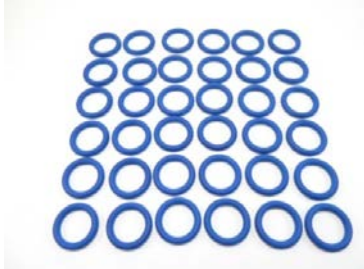


A1-23576 **Injector Repair Kit**
External O'ring Kit

Use : Ford Powerstroke 6.0 / 4.5 L / G2.8



Navistar - Ford Powerstroke



A1-15309 **Injector Repair Kit**
O'Ring Set (36 pcs)

Use : Ford Powerstroke 7.3
Navistar



PRKPM507 **Injector Tip (Nozzle)**
Other No : 41507/31

Use : Navistar 466E
Injectors Used : 1824740C1 / EX63809BC

**For other Injector tips you can view our
Heavy Duty Nozzle catalog for**



Ford Powerstroke



PRKPWR-0001 **Harness Kit Ford**

FORD Powerstroke 6.0L / 4.5L

AP60800, 1843481C94, 1846692C92
1844751C2, 1845150C92, 1846692C92,
1877748C1, 1878284C91, 1878285C91,
1879998C91



A1-23594 **Injector Repair Kit**

Use : Detroit Diesel 50/60 Series



A1-23595 **Injector Repair Kit
External Body + Solenoid**

Use : Detroit Diesel 50/60 Series



P2-03076 **Injector Spacer**

Use : Detroit Diesel 50/60 Series
Suitable Cummins N14 / Celect



PRK3090942 Fuel Pump

Use : Cummins Diesel Engine QSM11
ISM11 N14
Oem : 3090942



PRK4954880 FUEL GEAR PUMP

Use : Cummins Diesel Engine QSM11
ISM11 N14
Oem : 4954880
Other : 4010324, 4010253, 3348112



PRK3013811 Cummins AFC Diaphragm Bellows

Use : Cummins Diesel Engine QSM11
ISM11 N14
Oem : 3013811



PRK3010814 Gov. Plunger

Use : Cummins Diesel Engine QSM11
ISM11 N14
Oem : 3010814



PRK129839 CUMMINS SHUTOFF VALVE SHIELD

Use : Cummins Diesel Engine QSM11
ISM11 N14

Oem : 129839



PRK3046200 SPIDER COUPLING

Use : Cummins Diesel Engine QSM11
ISM11 N14

Oem : 3046200



PRK3095356 PT Pump Shaft

Use : Cummins Diesel Engine QSM11
ISM11 N14

Oem : 3095356



PRK3095355 PT pump Jaw Coupling

Use : Cummins Diesel Engine QSM11
ISM11 N14

Oem : 3095355

REF.NOZZLE	CUMMINS CELECT N14 - M11 - L10	ENGINES USED
	OTHER NO	
PRK3411404	3411758; 3411401	M11; M11-E
PRK3095734	3411755	M11;
PRK3095043	3095040; 3411753; 3045102	M11-330; M11-330E
PRK3609925	3095731; 3411756; 3609922; 3166395;	N14;-480CE; 525; 525E; 526CE; M11-ISM-335
PRK3095729	3411754; 3087772	M11; MTA11; M11-350
PRK3609861	3411759; 3083846; 3087560; 3087733	N14-330P; N14
PRK3411694	3409975; 3411691; 3411766; 3411762	N14; NTA14-E
PRK3085492	3087557; 3411752; 3084589; 3087772; 3411754	M-11-250E; 280E; 310; 330;330C; 335E;M11-370
PRK3076071	3070739; 3652541; 3081314; 3073995; 3081315; 3652542	N14; N14-310E; N14-460E; 430E; N14-330E; N14-410E; N14-370E; N14-350E
PRK3411690	3087807; 3411381; 3411761; 3411765	N14-310E; N14-310; N14
PRK3609852	3087807; 3411381; 3411761; 3411765	N14-310E; N14-310; N14
PRK3409978	3411762; 3409975; 3411691; 3411766	N14; NTA14-E
PRK3609855	3083848; 3087734; 3411760; 3087558; 3087737;	NTA14-E; N14-435E; N14-500E; N14-350; N14;
PRK3079963	3652540; 3081318; 3073996	L10
PRK3411388	3411385; 3411767; 3087558; 2411767	NTA14-E; N14
PRK3088175	3088178; 3411764	N14-480CE; 525; 525C; 525E; 526CE; N14-525;
PRK3087791	3411763; 3087788; 3087556; 3095086	N14-500E; N14-525E; N14
PRK3076062	3652516; 3076029; 3071534;	L10; L10370E
PRK4908174	4928171	
PRK4061854		Celect N14
PRK4026225	4026222; 3609922; 3411756	M11-335



REF.NOZZLE	CUMMINS / DETROIT DIESEL SERIES 60	ENGINES USED
	OTHER NO	
PRK4902924	4902921	Cummins Celect M11
PRK4902928	4902928	
PRKP6051-A1	4991751-A1	Detroit Diesel S60 11.1L Detroit Diesel S 60 Serie
PRKP6051-A1		
PRKP6051-A2	4991751-A2	Detroit Diesel S 60 Serie Detroit Diesel S 60 Serie
PRKP6052-B1	4991752-B1	Detroit Diesel S 60 Serie Detroit Diesel S 60 Serie
PRKP6052-B2	4991752-B2	Detroit Diesel S 60 Serie Detroit Diesel S 60 Serie
PRKP6052-B3	4991752-B3	Detroit Diesel S50/60 8.5L
PRKP6052-B3		
PRKP6052-B4	4991752-B4	Detroit Diesel S 60 Serie
PRKP6052-B4		
PRKP6052-B4		
PRKP6052-B5	4991752-B5	Detroit Diesel S50/60 12.7L
PRKP6052-B5		
PRKP6052-B6	4991752-B6	Detroit Diesel S 50/60 Serie
PRKP6053-C1	4991753-C1	Detroit Diesel S 60 Serie
PRKP6053-C1		
PRKP6053-C1		
PRKP6053-C2	4991753-C2	Detroit Diesel S60 11.1L
PRKP6053-C2		
PRKP6053-C3	4991753-C3	Detroit Diesel S60 11.1L & 12
PRKP6054-D1	4991754-D1	Detroit Diesel S 60 Serie
PRKP6054-D2	4991754-D2	Detroit Diesel S 60 Serie
PRKP6054-D2		
PRKP6054-D2		
PRKP6054-D3	4991754-D3	Detroit Diesel S 60 Serie
PRKP6054-D3		
PRKP6054-D4	4991754-D4	Detroit Diesel S60 12.7L
PRKP6054-D5	4991754-D5	Detroit Diesel S60 12.7L



REF.NOZZLE	DETROIT DIESEL SERIES 60		ENGINES USED
	OTHER NO		
PRKG6438	5226438	9-6	Detroit Diesel 92, N, LS, 9 6
PRKG6272	5226272	9-,0068-165A	Detroit Diesel 92 series
PRKG9026	5229026	6-,055-165A	Detroit Diesel N55 - N60
PRKG9030	5229030	8-,0055-165A	Detroit Diesel N65
PRKG9034	5229034	6-,006-165A	Detroit Diesel N45 & N50
PRKG9184	5229184	7-,007-165A	Detroit Diesel F70...105
PRKG9192	5229192	7-,006-165A	Detroit Diesel 53 M60 - 7N65 - 5A72
PRKG9184	5229184	7-,007-165A	Detroit Diesel 9215, 9280, 9285
PRKG9256	5229256	7-,006-165A	Detroit Diesel M95 N80,90
PRKG9516	5229516	7-,0075-165A	Detroit Diesel 7125, 9210
PRKG9636	5229636	9-,0058-165A	Detroit Diesel 7A65,70,75 7C70,75
PRKG9806	5229806	8-,0068-165A	Detroit Diesel FB/FC70,75,80,90
REF.NOZZLE	DETROIT DIESEL SERIES 53 - 71, S		ENGINES USED
	OTHER NO		
PRKG8101	5228101		DETROIT DIESEL SERIES 53/71, S
PRKG8126	5228126		DETROIT DIESEL SERIES 53/71, S
PRKG8304	5228304		DETROIT DIESEL SERIES 53/71, S
PRKG8306	5228306		DETROIT DIESEL SERIES 53/71, S
PRKG8378	5228378		DETROIT DIESEL SERIES 53/71, S
PRKG8495	5228495		DETROIT DIESEL SERIES 53/71, S
PRKG8552	5228552		DETROIT DIESEL SERIES 53/71, S
PRKG8656	5228656		DETROIT DIESEL SERIES 53/71, S
PRKG8658	5228658		DETROIT DIESEL SERIES 53/71, S
PRKG8661	5228661		DETROIT DIESEL SERIES 53, 71, 92
PRKG8668	5228668		DETROIT DIESEL SERIES 53, 71, 92
PRKG8682	5228682		DETROIT DIESEL SERIES 53, 71, 92
PRKG8684	5228684		DETROIT DIESEL SERIES 53, 71, 92
PRKG8691	5228691		DETROIT DIESEL SERIES 53, 71, 92
PRKG8749	5228749		DETROIT DIESEL SERIES 53, 71, 92



REF.NOZZLE	DETROIT DIESEL SERIES S53 - 71 , S	ENGINES USED
	OTHER NO	
PRKG8804	P&B 5228804	Detroit Diesel 53, 71, 92
PRKG8878	5228878	Detroit Diesel 53, 71, 92
PRKG8928	5228928	Detroit Diesel 53, 71, 92
PRKG9181	5229181	Detroit Diesel 53, 71, 92
PRKG9188	5229188	Detroit Diesel 53, 71, 92
PRKG9268	5229268	Detroit Diesel 53, 71, 92
PRKG9278	5229278	Detroit Diesel 53, 71, 92
PRKG9282	5229282	Detroit Diesel 53, 71, 92
PRKG9292	5229292	Detroit Diesel 53, 71, 92
PRKG9298	5229298	Detroit Diesel 53, 71, 92
PRKG9342	5229342	Detroit Diesel 53, 71, 92
PRKG9346	5229346	Detroit Diesel 53, 71, 92
PRKG9354	5229354	Detroit Diesel 53, 71, 92
PRKG9356	4229356	Detroit Diesel 53, 71, 92
PRKG9362	5229362	Detroit Diesel 53, 71, 92
PRKG9366	5229366	Detroit Diesel 53, 71, 92
PRKG9372	5229372	Detroit Diesel 53, 71, 92
PRKG9422	P&B 5226422	Detroit Diesel 53
PRKG9608	5229608	Detroit Diesel 53, 71, 92
PRKG9776	5229776	Detroit Diesel 53, 71, 92
PRKG9808	5229808	Detroit Diesel 53, 71, 92



REF.NOZZLE	GENERAL MOTORS EMD ENGINE		ENGINES USED
	OTHER NO		
PRKEM6131	5226131	7-,0152-150	Engine EMD
PRKEM5641	5235641	6-,0165-150AL	Engine EMD
PRKEM7001	5227001	7-,015-150	Engine EMD
PRKEM9195	5229195	5-,0134-150	Engine EMD
PRKEM9230	5229230	6-,0134-150	Engine EMD
PRKEM9235	5229235	6-,012-150	Engine EMD
PRKEM9260	5229260	6-,012-150	Engine EMD
PRKEM9265	5229265	7-,014-160	Engine EMD
PRKEM9270	5229270	7-,012-160	Engine EMD
PRKEM9275	5229275	7-,012-160	Engine EMD
REF.NOZZLE	GENERAL MOTORS EMD ENGINE		ENGINES USED
	OTHER NO		
PRKEM6128	5226128		Engine EMD
PRKEM6464	5226464		Engine EMD
PRKEM7003	5227003		Engine EMD
PRKEM7853	5227853		Engine EMD
PRKEM8236	5228236		Engine EMD
PRKEM8574	5228574		Engine EMD
PRKEM8894	5228894		Engine EMD
PRKEM9011	5229011		Engine EMD
PRKEM9705	5229705		Engine EMD
PRKEM6153	5226153		Engine EMD
PRKEM8538	5228538		Engine EMD
PRKEM8571	5228571		Engine EMD
PRKEM8572	5228572		Engine EMD



REF.NOZZLE	LIGHT DUTY COMMERCIAL VEHICLES				ENGINES USED
	OEM NO	Make	Type	OE INJECTOR CODES	
PRKVX40060	F00VX40060	Bosch Piezo	Powerstroke	0 445 117 015 - 0 445 117 016 0 445 117 023 - 0 986 435 415	FORD F250/350 6.7 L (2011 - 2017)
PRKVX40115	F00VX40115	Bosch Piezo	Powerstroke	0 445 117 040 - 0 445 117 043 0 986 435 433	FORD F250/350/550/650/650 6.7 L
PRKVX40045	F00VX40045	Bosch Piezo	Duramax	0 445 117 008	CHEVROLET / GMC 6.6 L
PRKVX40051	F00VX40051	Bosch Piezo	Duramax	0 445 117 010	CEHEVROLET / GMC / SILVERADO 6.6 L
PRK6045A	CV0802P150	Navistar Nozzle	Navistar	1878284C91 - 1844751C2 - 184510C92 1846692C92 - 1877748C1 - 1878285C91	E 350 - E 450 VT365 6.0 L Nominal
PRK64P0810C	M0006P154	Siemens	PIEZO	1875072C91	F250 Superduty 6.4 L (2008 - 2010)
PRK143P5519	DSLA 143 P 5519	Cummins	5.9 L	0 445 120 255	Dodge Ram 1500-2500 5.9 L (2003-2004)
PRK124P5516	DSLA 124 P 5516	Cummins	6.6 L	0 445 120 208 - 0 445 120 238	Dodge Ram 1500-2500 6.6 L (2003-2004)
PRK3037041	DPE 410006/31	3037041 BG 3037041 BJ	Navistar HEUI	1830094C92 - 1830570C92 - 1830571C2 1830572C93	DTE466E 230 Hp to 250 Hp 1997-1999 1530E 230 Hp to 300 Hp 1999
PRK3037041	DPE 410006/31	3037041 BG 3037041 BJ	Navistar HEUI	1830573C2 - 2593596C91	DTE466E 230 Hp to 250 Hp 1997-1999 1530E 230 Hp to 300 Hp 1999
PRK3037047	DPE 410006/31	3037047 BI	Navistar HEUI	1830559C91 - 1830560C2 - 1830561C92 1830562C2 - 1830740C92 - 2593594C91	DTE466E 175 Hp to 250 Hp 1999 DTE466E 175 Hp to 250 Hp 2000-2003
PRK3037102	DPE41007/31	3037102 v8 AA - FF	Navistar HEUI	1833640C1 - 1833641C1	T444E 1997-2000