



**EURODIESEL**

# EUI - EUP Calibration Shims

## Birim Pompa- Enjektör Şimleri

**Perk**  
Diesel

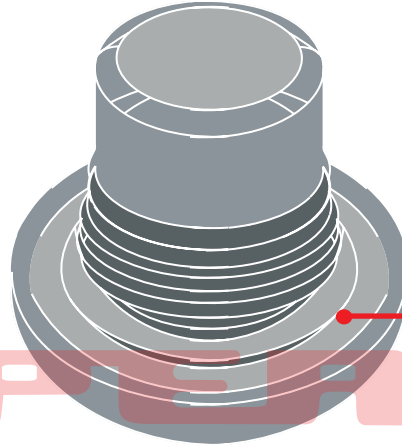
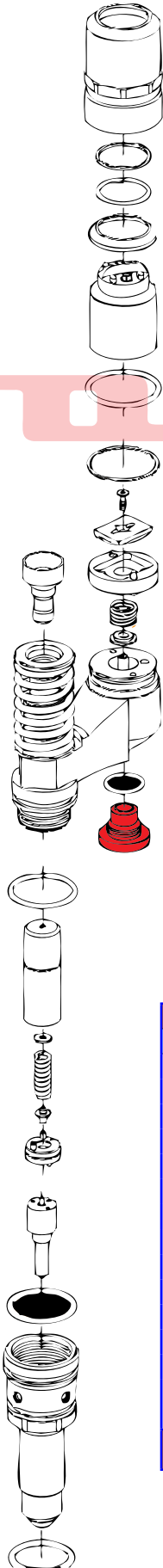
**OTOL PERK**

[www.eurodiesel.com](http://www.eurodiesel.com)

## PDE 100-90

www.eurodiesel.com

OTO PERK A.S 7419/12 Sokak No:22, 5. Site 35060 - Izmir / Turkiye



with O'R seat

**From 14,66 to 14,88**

Other sizes available upon request

Code PERK	Dimentions	Increase	QTY
A1-23390	14,66 to 14,88	0,02	60

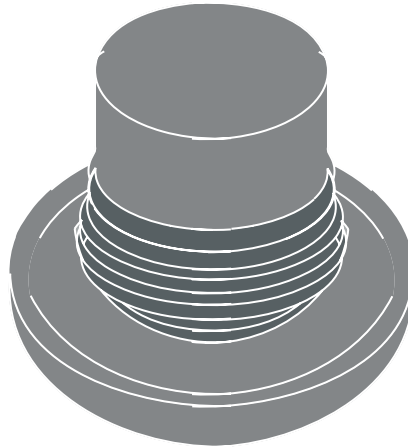
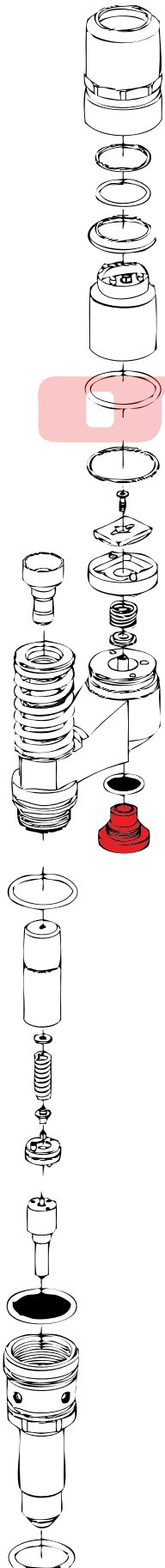


handbox 12 position

code individual thicknesses

dia	cod. PERK
14,66	A1-23390/1466
14,68	A1-23390/1468
14,70	A1-23390/1470
14,72	A1-23390/1472
14,74	A1-23390/1474
14,76	A1-23390/1476
14,78	A1-23390/1478
14,80	A1-23390/1480
14,82	A1-23390/1482
14,84	A1-23390/1484
14,86	A1-23390/1486
14,88	A1-23390/1488

## PDE 100-90



**From 14,56 to 15,10**

Other sizes available upon request

根据要求提供其它尺寸

Code PERK	Dimintions	Increase	QTY
A1-23391	14,56 to 14,78	0,02	60



handbox 12 position

Code PERK	Dimintions	Increase	QTY
A1-23392	14,80 to 15,10	0,02	80

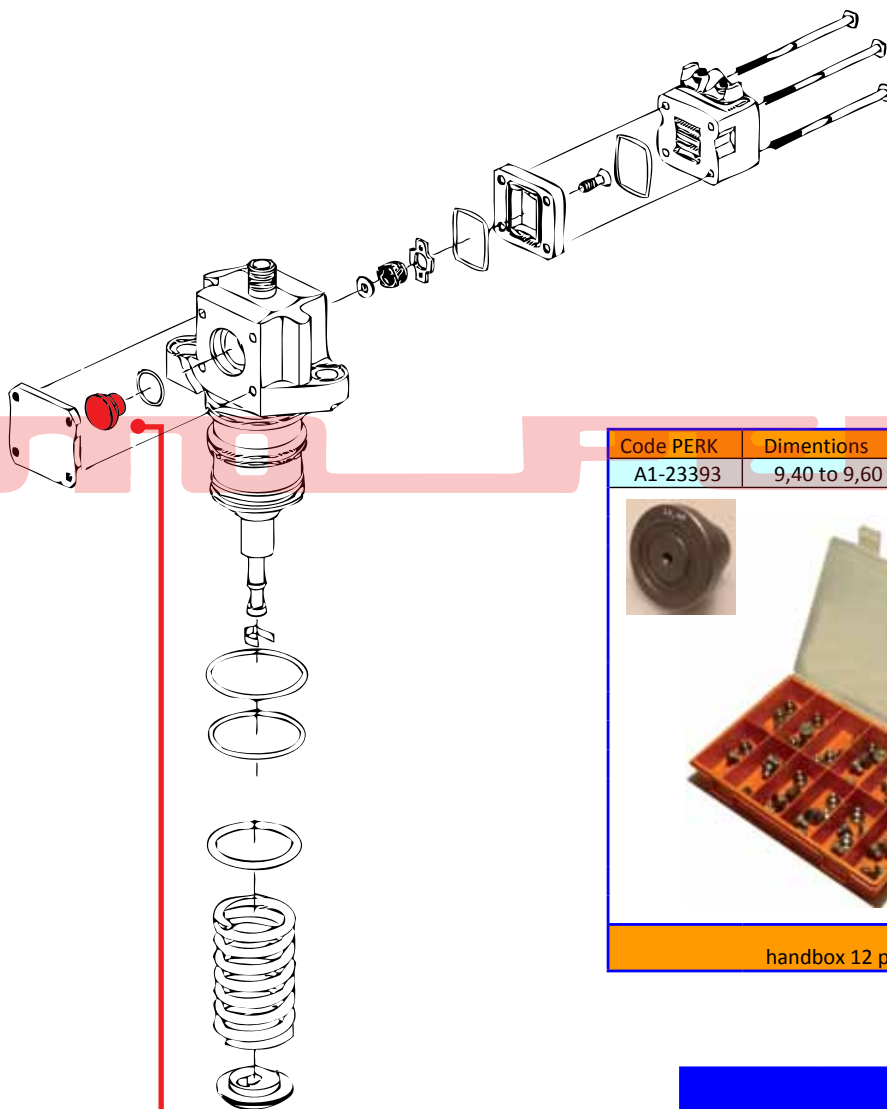


handbox 18 position

code individual thicknesses	
dia	cod. PERK
14,56	A1-23391/1456
14,58	A1-23391/1458
14,60	A1-23391/1460
14,62	A1-23391/1462
14,64	A1-23391/1464
14,66	A1-23391/1466
14,68	A1-23391/1468
14,70	A1-23391/1470
14,72	A1-23391/1472
14,74	A1-23391/1474
14,76	A1-23391/1476
14,78	A1-23391/1478
14,80	A1-23391/1480
14,82	A1-23391/1482
14,84	A1-23391/1484
14,86	A1-23391/1486
14,88	A1-23391/1488
14,90	A1-23391/1490
14,92	A1-23391/1492
14,94	A1-23391/1494
14,96	A1-23391/1496
14,98	A1-23391/1498
15,00	A1-23391/1500
15,02	A1-23391/1502
15,04	A1-23391/1504
15,06	A1-23391/1506
15,08	A1-23391/1508
15,10	A1-23391/1510

## PLD 1B100-PLD1D110

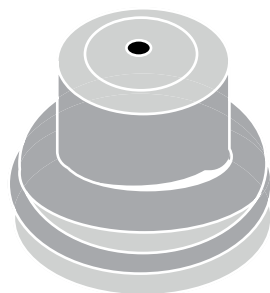
www.eurodiesel.com



Code PERK	Dimentionis	Increase	QTY
A1-23393	9,40 to 9,60	0,02	55



handbox 12 position



**9,40... to 9,60**

Other sizes available upon request

code individual thicknesses

misura	cod. PERK
9,40	A1-23393/940
9,42	A1-23393/942
9,44	A1-23393/944
9,46	A1-23393/946
9,48	A1-23393/948
9,50	A1-23393/950
9,52	A1-23393/952
9,54	A1-23393/954
9,56	A1-23393/956
9,58	A1-23393/958
9,60	A1-23393/960

OTO PERK A.S 7419/12 Sokak No:22, 5. Site 35060 - Izmir / Turkiye

## DELPHI UNIT INJECTOR

www.eurodiesel.com

OTO PERK A.S 7419/12 Sokak No:22, 5. Site 35060 - Izmir / Turkiye



**From 0,30.. to 0,58**

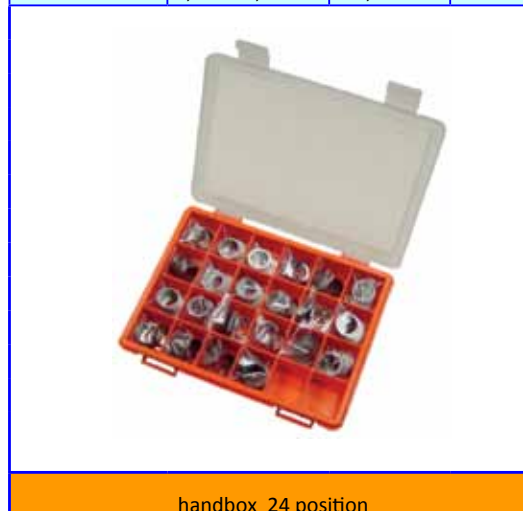
Other sizes available upon request

Code PERK	Dimintions	Increase	QTY
A1-23394	0,30 to 0,58	0,02	100



handbox 12 position

Code PERK	Dimintions	Increase	QTY
A1-23651	0,30 to 1,56	0,02	190

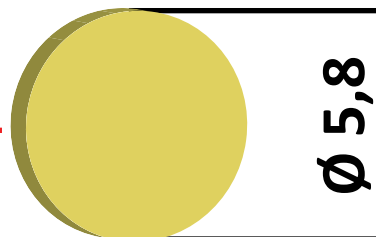
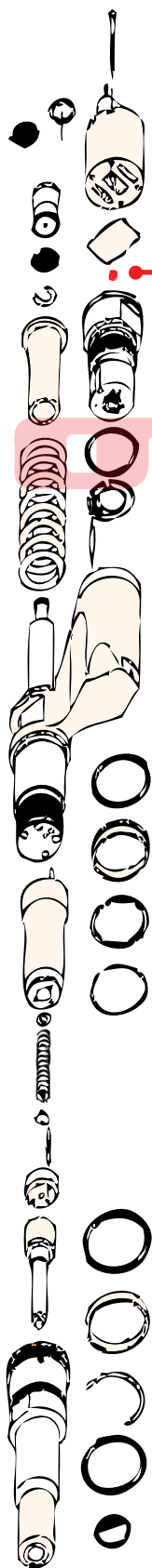


handbox 24 position

dia	ref. original	code PERK
0,30	7169-706KA	A1-23394/030
0,42	7169-706KB	A1-23394/042
0,44	7169-706KC	A1-23394/044
0,46	7169-706KD	A1-23394/046
0,48	7169-706KE	A1-23394/048
0,50	7169-706KF	A1-23394/050
0,52	7169-706KG	A1-23394/052
0,54	7169-706KH	A1-23394/054
0,56	7169-706KJ	A1-23394/056
0,58	7169-706KK	A1-23394/058

dia	ref. original	code PERK
0,60	7169-706KL	A1-23394/060
0,62	7169-706KM	A1-23394/062
0,64	7169-706KN	A1-23394/064
0,66	7169-706KP	A1-23394/066
0,68	7169-706KR	A1-23394/068
0,70	7169-706KS	A1-23394/070
1,00	7169-706KT	A1-23394/100
1,28	7169-706KU	A1-23394/128
1,56	7169-706KV	A1-23394/156

## DELPHI Unit Injector EUI



Ø 5,8

brass without hole

From **2,24** to **2,94**

Other sizes available upon request

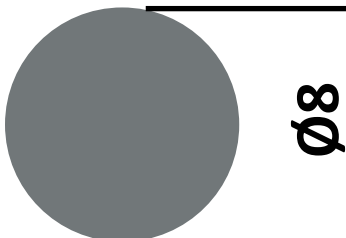
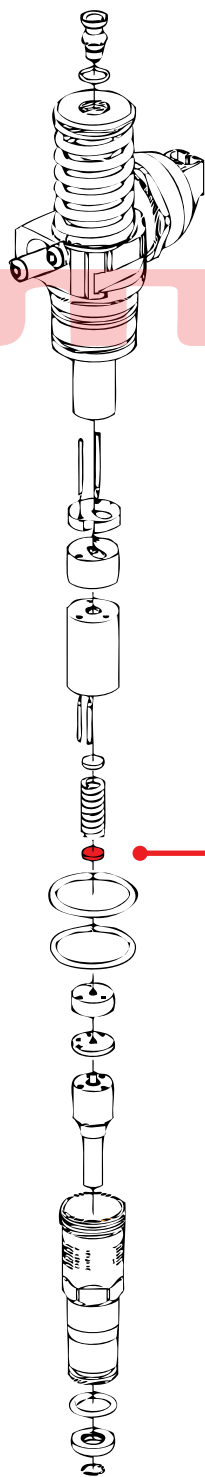
Code PERK	Dimentions	Increase	QTY
A1-23366	2,24 to 2,94	0,02	360



handbox 36 position

dia	ref. original	code PERK
2,24	7204-142A	A1-23366/224
2,26	7204-142B	A1-23366/226
2,28	7204-142C	A1-23366/228
2,30	7204-142D	A1-23366/230
2,32	7204-142E	A1-23366/232
2,34	7204-142F	A1-23366/234
2,36	7204-142G	A1-23366/236
2,38	7204-142H	A1-23366/238
2,40	7204-142J	A1-23366/240
2,42	7204-142K	A1-23366/242
2,44	7204-142L	A1-23366/244
2,46	7204-142M	A1-23366/246
2,48	7204-142N	A1-23366/248
2,50	7204-142P	A1-23366/250
2,52	7204-142Q	A1-23366/252
2,54	7204-142R	A1-23366/254
2,56	7204-142S	A1-23366/256
2,58	7204-142T	A1-23366/258

dia	ref. original	code PERK
2,60	7204-142U	A1-23366/260
2,62	7204-142V	A1-23366/262
2,64	7204-142W	A1-23366/264
2,66	7204-142X	A1-23366/266
2,68	7204-142Y	A1-23366/268
2,70	7204-142Z	A1-23366/270
2,72	7204-142AA	A1-23366/272
2,74	7204-142AB	A1-23366/274
2,76	7204-142AC	A1-23366/276
2,78	7204-142AD	A1-23366/278
2,80	7204-142AE	A1-23366/280
2,82	7204-142AF	A1-23366/282
2,84	7204-142AG	A1-23366/284
2,86	7204-142AH	A1-23366/286
2,88	7204-142AJ	A1-23366/288
2,90	7204-142AK	A1-23366/290
2,92	7204-142AL	A1-23366/292
2,94	7204-142AM	A1-23366/294



**From 1,00 to 1,45**

Other sizes available upon request

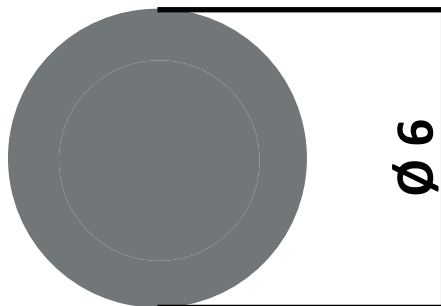
Code	Dimension	Inc.	Qty
P2-20016	1.00 to 1.45	0,02	240



code individual thicknesses

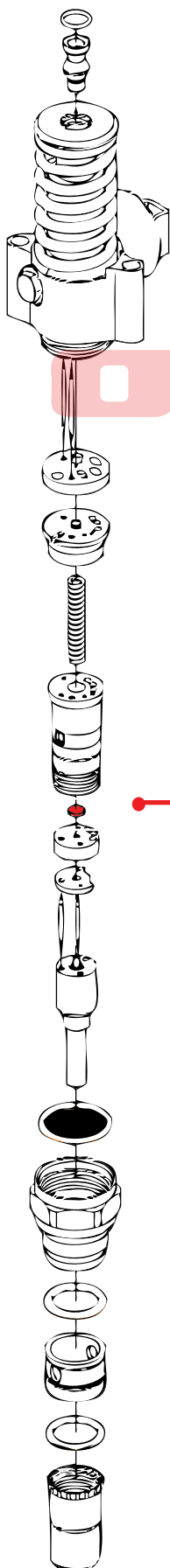
dia	cod.PERK	code original
1,00	P2-20016/100	1 410 067 016
1,01	P2-20016/101	1 410 067 141
1,03	P2-20016/103	1 410 067 142
1,05	P2-20016/105	1 410 067 143
1,07	P2-20016/107	1 410 067 144
1,09	P2-20016/109	1 410 067 145
1,11	P2-20016/111	1 410 067 146
1,13	P2-20016/113	1 410 067 147
1,15	P2-20016/115	1 410 067 148
1,17	P2-20016/117	1 410 067 149
1,19	P2-20016/119	1 410 067 150
1,21	P2-20016/121	1 410 067 151
1,23	P2-20016/123	1 410 067 152
1,25	P2-20016/125	1 410 067 153
1,27	P2-20016/127	1 410 067 154
1,29	P2-20016/129	1 410 067 155
1,31	P2-20016/131	1 410 067 156
1,33	P2-20016/133	1 410 067 157
1,35	P2-20016/135	1 410 067 158
1,37	P2-20016/137	1 410 067 159
1,39	P2-20016/139	1 410 067 160
1,41	P2-20016/141	1 410 067 161
1,43	P2-20016/143	1 410 067 162
1,45	P2-20016/145	1 410 067 163

## BOSCH PDE




From **1,00** to **1,45**

Other sizes available upon request



code individual thicknesses		
dia	cod. PERK	cod Original
1,00	P2-20017/100	-
1,01	P2-2001/101	-
1,03	P2-20017/103	-
1,05	P2-20017/105	-
1,07	P2-20017/107	-
1,09	P2-20017/109	-
1,11	P2-20017/111	1 410 067 304
1,13	P2-20017/113	1 410 067 306
1,15	P2-20017/115	1 410 067 308
1,17	P2-20017/117	1 410 067 310
1,19	P2-20017/119	1 410 067 312
1,21	P2-20017/121	1 410 067 314
1,23	P2-20017/123	1 410 067 316
1,25	P2-20017/125	1 410 067 318
1,27	P2-20017/127	1 410 067 320
1,29	P2-20017/129	1 410 067 322
1,31	P2-20017/131	1 410 067 324
1,33	P2-20017/133	1 410 067 326
1,35	P2-20017/135	1 410 067 328
1,37	P2-20017/137	1 410 067 330
1,39	P2-20017/139	1 410 067 332
1,41	P2-20017/141	1 410 067 334
1,43	P2-20017/143	1 410 067 336
1,45	P2-20017/145	1 410 067 338

Code PERK	Dimintions	Increase	QTY
P2-20017	1,00 to 1,45	0,02	240

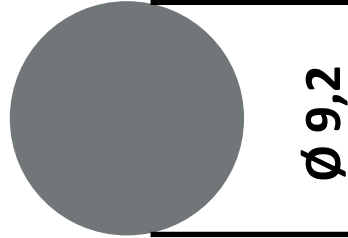


handbox 24 position



## BOSCH Unit Injector (Inside Selenoid)

www.eurodiesel.com



From **1,00** to **1,45**

OTO PERK  
Other sizes available upon request

OTO PERK A.S 7419/12 Sokak No:22, 5. Site 35060 - Izmir / Turkiye

code individual thicknesses	
dia	cod. PERK
1,00	P2-31100
1,01	P2-31101
1,03	P2-31103
1,05	P2-31105
1,07	P2-31107
1,09	P2-31109
1,11	P2-31111
1,13	P2-31113
1,15	P2-31115
1,17	P2-31117
1,19	P2-31119
1,21	P2-31121
1,23	P2-31123
1,25	P2-31125
1,27	P2-31127
1,29	P2-31129
1,31	P2-31131
1,33	P2-31133
1,35	P2-31-135
1,37	P2-31137
1,39	P2-31139
1,41	P2-31141
1,43	P2-31143
1,45	P2-31145

Code PERK	Dimention	Increase	QTY
P2-20011	1,00 to 1,45	0,02	240

hanbox 24 positions

## DELPHI Iniettore Pompa



**0,50... a 1,05**

**ALTRE MISURE DISPONIBILI A RICHIESTA**  
**Other sizes available upon request**  
**Otros tamaños disponibles bajo petición**  
**Другие размеры доступны по запросу**

Code PERK	Spessore	Incremento	n° pezzi
A1-23749	da 0,50 a 1,05	0,05	120



handbag 12 position

Code PERK	Spessore	Incre	n° pezzi
A1-23750	da 0,52 a 1,00	0,02	240



handbag 24 position

Code PERK	Spessore	Incre n°	pezzi
A1-23715	da 0,502 a 0,995	0,017	300

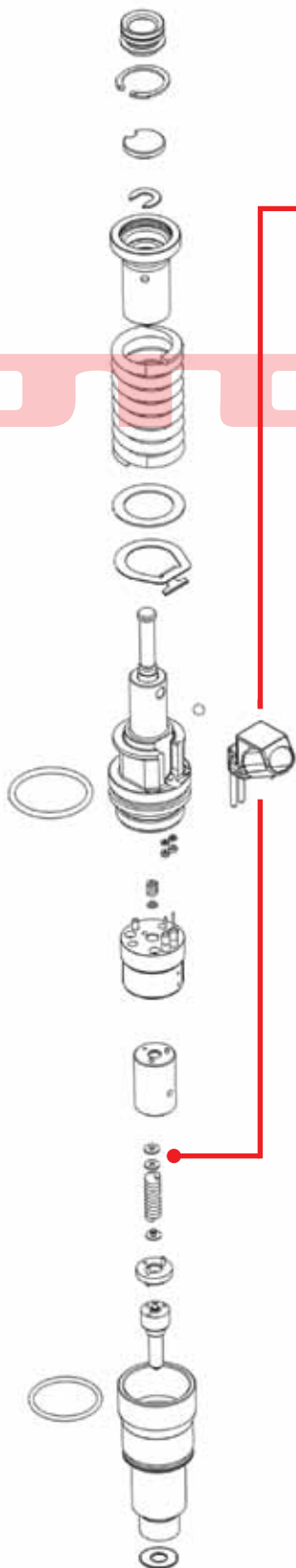


handbag 36 position

misura	rif. original	cod.PERK
0,502	7206-0188A	A1-23415/502
0,519	7206-0188B	A1-23415/519
0,536	7206-0188C	A1-23415/536
0,553	7206-0188D	A1-23415/553
0,570	7206-0188E	A1-23415/570
0,587	7206-0188F	A1-23415/587
0,604	7206-0188G	A1-23415/604
0,621	7206-0188H	A1-23415/621
0,638	7206-0188J	A1-23415/638
0,655	7206-0188K	A1-23415/655
0,672	7206-0188L	A1-23415/672
0,689	7206-0188M	A1-23415/689
0,706	7206-0188N	A1-23415/706
0,723	7206-0188P	A1-23415/723
0,740	7206-0188Q	A1-23415/740

misura	rif. original	cod.PERK
0,757	7206-0188R	A1-23415/757
0,774	7206-0188S	A1-23415/774
0,791	7206-0188T	A1-23415/791
0,808	7206-0188U	A1-23415/808
0,825	7206-0188V	A1-23415/825
0,842	7206-0188W	A1-23415/842
0,859	7206-0188X	A1-23415/859
0,876	7206-0188Y	A1-23415/876
0,893	7206-0188Z	A1-23415/893
0,910	7206-0188AA	A1-23415/910
0,927	7206-0188AB	A1-23415/927
0,944	7206-0188AC	A1-23415/944
0,961	7206-0188AD	A1-23415/961
0,978	7206-0188AE	A1-23415/978
0,995	7206-0188AF	A1-23415/995

## DELPHI EUI ( Volvo 2 pin Injectors )



From **0,30** to **1,60**

Other sizes available upon request

Code PERK	Dimentions	Increase	QTY
A1-23727	0,30 to 1,60	-	200

handbox24 position

dia	ref. original	code PERK
0,30	7207-0178A	A1-23727/030
0,42	7207-0178B	A1-23727/042
0,44	7207-0178C	A1-23727/044
0,46	7207-0178D	A1-23727/046
0,48	7207-0178E	A1-23727/048
0,50	7207-0178F	A1-23727/050
0,52	7207-0178G	A1-23727/052
0,54	7207-0178H	A1-23727/054
0,56	7207-0178J	A1-23727/056
0,58	7207-0178K	A1-23727/058
0,60	7207-0178L	A1-23727/060
0,62	7207-0178M	A1-23727/062
0,64	7207-0178N	A1-23727/064
0,66	7207-0178P	A1-23727/066
0,68	7207-0178R	A1-23727/068
0,70	7207-0178S	A1-23727/070
1,00	7207-0178T	A1-23727/100
1,28	7207-0178U	A1-23727/128
1,56	7207-0178V	A1-23727/156
1,60	-	A1-23727/160

# DELPHI



da 0,40 .. a 0,80

**ALTRE MISURE DISPONIBILI A RICHIESTA**  
 Other sizes available upon request  
 Otros tamaños disponibles bajo petición



Code PERK	Spessore	Incremento	n° pezzi
A1-23745	da 0,40 a 0,80	0,02	210



handbag 24 position

misura	rif. original	cod.PERK
0,40	-	A1-23745/040
0,42	-	A1-23745/042
0,44	-	A1-23745/044
0,46	-	A1-23745/046
0,48	-	A1-23745/048
0,50	-	A1-23745/050
0,52	-	A1-23745/052
0,54	-	A1-23745/054
0,56	-	A1-23745/056
0,58	-	A1-23745/058
0,60	-	A1-23745/060
0,62	-	A1-23745/062
0,64	-	A1-23745/064
0,66	-	A1-23745/066
0,68	-	A1-23745/068
0,70	-	A1-23745/070
0,72	-	A1-23745/072
0,74	-	A1-23745/074
0,76	-	A1-23745/076
0,78	-	A1-23745/078
0,80	-	A1-23745/080

**DELPHI**

www.eurodiesel.com



da 1,15 .. a 1,70

**ALTRE MISURE DISPONIBILI A RICHIESTA**  
Other sizes available upon request  
Otros tamaños disponibles bajo petición

Code PERK	Spessore	Incremento	n° pezzi
A1-23758	da 1,15 a 1,70	0,05	120



handbag 12 position

Code PERK	Spessore	Incremento	n° pezzi
A1-23759	da 1,20 a 1,70	0,02	240



handbag 24 position

code individual thicknesses

misura	cod. PERK
1,15	A1-23758/115
1,20	A1-23758/120
1,25	A1-23758/125
1,30	A1-23758/130
1,35	A1-23758/135
1,40	A1-23758/140
1,45	A1-23758/145
1,50	A1-23758/150
1,55	A1-23758/155
1,60	A1-23758/160
1,65	A1-23758/165
1,70	A1-23758/170

OTO PERK A.S 7419/12 Sokak No:22, 5. Site 35060 - Izmir / Turkiye

**DELPHI**



da 0,40 .. a 0,80

**ALTRE MISURE DISPONIBILI A RICHIESTA**  
Other sizes available upon request  
Otros tamaños disponibles bajo petición

Code PERK	Spessore	Incremento	n° pezzi
A1-23747	da 0,40 a 0,80	0,02	210



handbag 24 position